

PCPI eSpecification

Clinical Topic	Adult Kidney Disease	
Measure Title	Patients on Erythropoiesis Stimulating Agent (ESA)—Hgb Level > 12.0 g/dL	
Measure #	AKID-7	
Measure Description	<p>Percentage of calendar months within a 12-month period during which a hemoglobin (Hgb) level is measured for patients aged 18 years and older with a diagnosis of advanced CKD (stage 4 or 5, not receiving RRT) or ESRD (who are on hemodialysis or peritoneal dialysis) who are also receiving ESA therapy have a hemoglobin (Hgb) level > 12.0 g/dL</p> <p>Note: For this measure, a lower score indicates higher quality</p>	
Measurement Period	Twelve consecutive months	
Initial Patient Population	<p><u>IPP Option 1</u></p> <p>Patient Age: Patient aged 18 years and older starts before the start of the measurement period</p> <p>Diagnosis Active: Patient has a diagnosis of CKD (stage 4 or 5, not receiving RRT) starts before or during encounter during measurement period</p> <p>Encounter: At least two visits with the physician, physician's assistant, or nurse practitioner during the measurement period</p>	<p><u>IPP Option 2</u></p> <p>Patient Age: Patient aged 18 years and older starts before the start of the measurement period</p> <p>Diagnosis Active: Patient has a diagnosis of ESRD starts before or during the measurement period</p> <p>Procedure Performed: Patients receiving hemodialysis or peritoneal dialysis during the measurement period</p>
Denominator Statement	<p>All calendar months during which a hemoglobin (Hgb) level is measured for patients aged 18 years and older with a diagnosis of advanced CKD (stage 4 or 5, not receiving RRT) or ESRD (who are on hemodialysis or peritoneal dialysis) who are also receiving ESA therapy</p> <p>Definition: RRT (Renal Replacement Therapy): For the purposes of this measure, RRT includes hemodialysis, peritoneal dialysis, and kidney transplantation</p>	
Numerator Statement	<p>Calendar months during which patients' most recent hemoglobin (Hgb) level is > 12.0 g/dL*</p> <p>*The hemoglobin result used for this measure should be the most recent (last) hemoglobin result recorded for each calendar month</p>	
Denominator Exceptions	None	

**Adult Kidney Disease
DRAFT Data Elements for PCPI eSpecification**

Measure 7--Patients on Erythropoiesis Stimulating Agent (ESA)--Hgb Level > 12.0 g/dL

QDM* Standard Category	QDM* Data Type	Standard Terminology	Constraints	Value Set Name	Value of Data Element	Data Source	Comments/Rationale
Measure Timing	N/A	N/A	TBD by measure implementer	Measurement Start Date			
Measure Timing	N/A	N/A	TBD by measure implementer	Measurement End Date			
Individual Characteristic	Patient Characteristic	TBD	during measurement period	Gender		<ul style="list-style-type: none"> Electronic Administrative Claims Electronic Health Record (EHR) 	This data element is collected for the purpose of stratifying results in an effort to highlight disparities.
Individual Characteristic	Patient Characteristic	TBD	during measurement period	Race		<ul style="list-style-type: none"> Electronic Health Record (EHR) 	This data element is collected for the purpose of stratifying results in an effort to highlight disparities.
Individual Characteristic	Patient Characteristic	TBD	during measurement period	Ethnicity		<ul style="list-style-type: none"> Electronic Health Record (EHR) 	This data element is collected for the purpose of stratifying results in an effort to highlight disparities.
Individual Characteristic	Patient Characteristic	TBD	during measurement period	Primary Language		<ul style="list-style-type: none"> Electronic Health Record (EHR) 	This data element is collected for the purpose of stratifying results in an effort to highlight disparities.
Individual Characteristic	Patient Characteristic	LN	starts before the start of measurement period	Date of Birth		<ul style="list-style-type: none"> Electronic Administrative Claims Electronic Health Record (EHR) 	
Individual Characteristic	Patient Characteristic	Calculated	starts before the start of measurement period	Age	≥ 18	<ul style="list-style-type: none"> Electronic Administrative Claims Electronic Health Record (EHR) 	Measurement start date minus Date of Birth must be greater than or equal to 18 years.
Condition / Diagnosis / Problem	Diagnosis, Active	I9, I10, SNM	starts before or during encounter	Chronic Kidney Disease, Stage IV		<ul style="list-style-type: none"> Electronic Administrative Claims Electronic Health Record (EHR) 	
Condition / Diagnosis / Problem	Diagnosis, Active	I9, I10, SNM	starts before or during encounter	Chronic Kidney Disease, Stage V		<ul style="list-style-type: none"> Electronic Administrative Claims Electronic Health Record (EHR) 	
Encounter	Encounter, Performed	CPT	during measurement period	Encounter, Outpatient		<ul style="list-style-type: none"> Electronic Administrative Claims Electronic Health Record (EHR) 	
Condition / Diagnosis / Problem	Diagnosis, Active	I9, I10, SNM	during measurement period	End Stage Renal Disease (ESRD)		<ul style="list-style-type: none"> Electronic Administrative Claims Electronic Health Record (EHR) 	
Procedure	Procedure, Performed	SNM, CPT	during measurement period	Hemodialysis		<ul style="list-style-type: none"> Electronic Administrative Claims Electronic Health Record (EHR) 	
Procedure	Procedure, Performed	SNM, CPT	during measurement period	Peritoneal Dialysis		<ul style="list-style-type: none"> Electronic Administrative Claims Electronic Health Record (EHR) 	
Medication	Medication, Active	CPT II, RxNorm	during measurement period	Erythropoiesis Stimulating Agent (ESA)		<ul style="list-style-type: none"> Electronic Administrative Claims Electronic Health Record (EHR) 	
Laboratory Test	Laboratory Test, Performed	LN, CPT	during calendar month during measurement period	Hemoglobin		<ul style="list-style-type: none"> Electronic Administrative Claims Electronic Health Record (EHR) 	
Laboratory Test	Laboratory Test, Result	LN, CPT	most recent (last) result during calendar month	Hemoglobin	> 12.0 g/dL	<ul style="list-style-type: none"> Electronic Administrative Claims Electronic Health Record (EHR) 	
No Valid Exceptions							

**For this measure, a lower score indicates a higher quality.

*The Quality Data Model (QDM), Version 2.1, was developed by National Quality Forum (NQF).

PCPI eSpecification

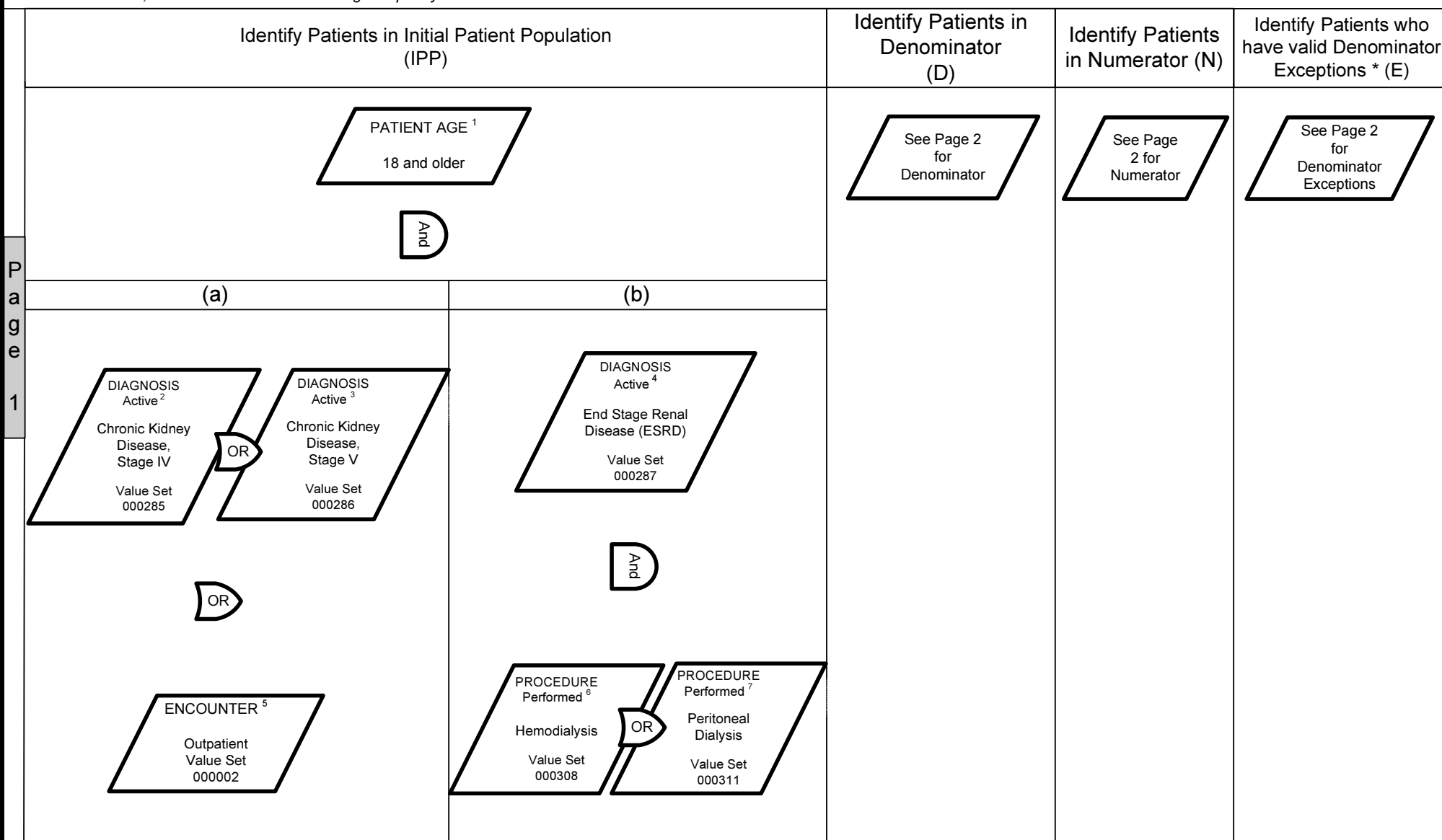
Measure Logic for Adult Kidney Disease : Patients on Erythropoiesis Stimulating Agent (ESA)—Hgb Level > 12.0 g/dL

Measure Description: Percentage of calendar months within a 12-month period during which a hemoglobin (Hgb) level is measured for patients aged 18 years and older with a diagnosis of advanced CKD (Stage 4 or 5, not receiving RRT) or ESRD (who are on hemodialysis or peritoneal dialysis) who are also receiving ESA therapy have a hemoglobin (Hgb) level > 12.0 g/dL

Measurement Period: 12 Consecutive Months

PCPI Measure #: AKID-7

•For this measure, a lower score indicates a higher quality.



PARAMETER SPECIFICATIONS (Value Sets are found in the Coding Appendices):

IPP: In (IPP) follow pathway, (a) or (b), based on applicable diagnosis; ¹ Patient Age: measurement start date minus birth date (value set 000307) ≥ 18 years starts before the start of measurement period; ^{2 3} Diagnosis, Active: starts before or during encounter during measurement period; ⁴ Diagnosis, Active: starts before or during measurement period; ⁵ Encounter: count ≥ 2 during measurement period; ^{6 7} Procedure, Performed: during measurement period;

PCPI eSpecification

Measure Logic for Adult Kidney Disease : Patients on Erythropoiesis Stimulating Agent (ESA)—Hgb Level > 12.0 g/dL

Measure Description: Percentage of calendar months within a 12-month period during which a hemoglobin (Hgb) level is measured for patients aged 18 years and older with a diagnosis of advanced CKD (Stage 4 or 5, not receiving RRT) or ESRD (who are on hemodialysis or peritoneal dialysis) who are also receiving ESA therapy have a hemoglobin (Hgb) level > 12.0 g/dL

Measurement Period: 12 Consecutive Months

PCPI Measure #: AKID-7

•For this measure, a lower score indicates a higher quality.

Identify Patients in Initial Patient Population (IPP)	Identify Patients in Denominator (D)	Identify Patients in Numerator (N)	Identify Patients who have valid Denominator Exceptions * (E)
<div>See Page 2 for Initial Patient Population</div>	<div>All Patients Identified within the Initial Patient Population</div> <div>And</div> <div> MEDICATION Active⁸ Erythropoietin Stimulating Agent (ESA) Value Set 000319 </div> <div>And</div> <div> LABORATORY TEST Performed⁹ Hemoglobin Value Set 000318 </div>	<div>All Patients Identified within the Denominator</div> <div>And</div> <div> LABORATORY TEST Result¹⁰ Hemoglobin Level > 12.0 g/dL </div>	<div>No Valid Denominator Exceptions for this Measure</div>

PARAMETER SPECIFICATIONS (Value Sets are found in the Coding Appendices):

D: ⁸ Medication, Active: during measurement period; ⁹ Laboratory Test, Performed: during a calendar month during measurement period;

N: ¹⁰ Laboratory Test, Result: result > 12.0 g/dL during the calendar month during measurement period;

Basic Measure Calculation:

$$\frac{(N)}{(D) - (E)} = \%$$

The PCPI strongly recommends that exception rates also be computed and reported alongside performance rates as follows:

Exception Calculation:

$$\frac{(E)}{(D)} = \%$$

Exception Types:

E= E1 (Medical Exceptions) + E2 (Patient Exceptions) + E3 (System Exceptions)

For patients who have more than one valid exception, only one exception should be counted when calculating the exception rate

	Initial Patient Population (IPP)	Denominator (D)	Numerator (N)	Denominator Exceptions (E)
	<p>Definition: The initial patient population identifies the general group of patients that the performance measure is designed to address; usually focused on a specific clinical condition (e.g., coronary artery disease, asthma). For example, a patient aged 18 years and older with a diagnosis of CAD who has at least 2 Visits during the measurement period.</p>	<p>Definition: The denominator defines the specific group of patients for inclusion in a specific performance measure based on specific criteria (e.g., patient's age, diagnosis, prior MI). In some cases, the denominator may be identical to the initial patient population.</p>	<p>Definition: The numerator defines the group of patients in the denominator for whom a process or outcome of care occurs (e.g., flu vaccine received).</p>	<p>Definition: Denominator exceptions are the valid reasons why patients who are included in the denominator population did not receive a process or outcome of care (described in the numerator). Patients may have Denominator Exceptions for medical reasons (e.g., patient has an egg allergy so they did not receive flu vaccine); patient reasons (e.g., patient declined flu vaccine); or system reasons (e.g., patient did not receive flu Vaccine due to vaccine shortage). These cases are removed from the denominator population for the performance calculation, however the number of patients with valid exceptions should be calculated and reported. This group of patients constitutes the Denominator Exception reporting population – patients for whom the numerator was not achieved and there is a valid Denominator Exception.</p>
	Find the patients who meet the Initial Patient Population criteria (IPP)	<p>Find the patients who qualify for the denominator (D):</p> <ul style="list-style-type: none"> ○ From the patients within the Patient Population criteria (IPP) select those people who meet Denominator selection criteria. <p>(In some cases the IPP and D are identical).</p>	<p>Find the patients who qualify for the Numerator (N):</p> <ul style="list-style-type: none"> ○ From the patients within the Denominator (D) criteria, select those people who meet Numerator selection criteria. ○ Validate that the number of patients in the numerator is less than or equal to the number of patients in the denominator 	<p>From the patients who did not meet the Numerator criteria, determine if the patient meets any criteria for the Denominator Exception (E1 + E2+E3). If they meet any criteria, they should be removed from the Denominator for performance calculation. As a point of reference, these cases are removed from the denominator population for the performance calculation, however the number of patients with valid exceptions should be calculated and reported.</p>

ADULT KIDNEY DISEASE
Coding Spreadsheet for PCPI eSpecification
AKID-7 : Patients on Erythropoiesis Stimulating Agent (ESA)--Hgb Level > 12.0 g/dL

Value Set ID	Clinical Topic	Topic Indicator	Measure Component	Standard Concept	Standard Category	Taxonomy	Code	Code Descriptor
000307	AKID	7	IPP	Birth Date	Individual Characteristic	LN	21112-8	Birth date: TmStp:Pt:~Patient:Qn:
000285	AKID	7	IPP (a)	Chronic Kidney Disease, Stage IV	Condition / Diagnosis / Problem	I9	585.4	Chronic Kidney Disease, Stage IV (Severe)
000285	AKID	7	IPP (a)	Chronic Kidney Disease, Stage IV	Condition / Diagnosis / Problem	I10	N18.4	Chronic Kidney Disease, Stage IV (severe)
000285	AKID	7	IPP (a)	Chronic Kidney Disease, Stage IV	Condition / Diagnosis / Problem	SNM	431857002	Chronic kidney disease stage 4 (disorder)
000286	AKID	7	IPP (a)	Chronic Kidney Disease, Stage V	Condition / Diagnosis / Problem	I9	585.5	Chronic Kidney Disease, Stage V
000286	AKID	7	IPP (a)	Chronic Kidney Disease, Stage V	Condition / Diagnosis / Problem	I10	N18.5	Chronic Kidney Disease, Stage V
000286	AKID	7	IPP (a)	Chronic Kidney Disease, Stage V	Condition / Diagnosis / Problem	SNM	433146000	Chronic kidney disease stage 5 (disorder)
000002	AKID	7	IPP (a)	Encounter	Encounter	CPT	99201	
000002	AKID	7	IPP (a)	Encounter	Encounter	CPT	99202	
000002	AKID	7	IPP (a)	Encounter	Encounter	CPT	99203	
000002	AKID	7	IPP (a)	Encounter	Encounter	CPT	99204	
000002	AKID	7	IPP (a)	Encounter	Encounter	CPT	99205	
000002	AKID	7	IPP (a)	Encounter	Encounter	CPT	99212	
000002	AKID	7	IPP (a)	Encounter	Encounter	CPT	99213	
000002	AKID	7	IPP (a)	Encounter	Encounter	CPT	99214	
000002	AKID	7	IPP (a)	Encounter	Encounter	CPT	99215	
000002	AKID	7	IPP (a)	Encounter	Encounter	CPT	99241	
000002	AKID	7	IPP (a)	Encounter	Encounter	CPT	99242	
000002	AKID	7	IPP (a)	Encounter	Encounter	CPT	99243	
000002	AKID	7	IPP (a)	Encounter	Encounter	CPT	99244	
000002	AKID	7	IPP (a)	Encounter	Encounter	CPT	99245	
000002	AKID	7	IPP (a)	Encounter	Encounter	CPT	99304	
000002	AKID	7	IPP (a)	Encounter	Encounter	CPT	99305	
000002	AKID	7	IPP (a)	Encounter	Encounter	CPT	99306	
000002	AKID	7	IPP (a)	Encounter	Encounter	CPT	99307	
000002	AKID	7	IPP (a)	Encounter	Encounter	CPT	99308	
000002	AKID	7	IPP (a)	Encounter	Encounter	CPT	99309	
000002	AKID	7	IPP (a)	Encounter	Encounter	CPT	99310	
000002	AKID	7	IPP (a)	Encounter	Encounter	CPT	99324	
000002	AKID	7	IPP (a)	Encounter	Encounter	CPT	99325	
000002	AKID	7	IPP (a)	Encounter	Encounter	CPT	99326	
000002	AKID	7	IPP (a)	Encounter	Encounter	CPT	99327	
000002	AKID	7	IPP (a)	Encounter	Encounter	CPT	99328	
000002	AKID	7	IPP (a)	Encounter	Encounter	CPT	99334	
000002	AKID	7	IPP (a)	Encounter	Encounter	CPT	99335	
000002	AKID	7	IPP (a)	Encounter	Encounter	CPT	99336	
000002	AKID	7	IPP (a)	Encounter	Encounter	CPT	99337	
000002	AKID	7	IPP (a)	Encounter	Encounter	CPT	99341	
000002	AKID	7	IPP (a)	Encounter	Encounter	CPT	99342	
000002	AKID	7	IPP (a)	Encounter	Encounter	CPT	99343	
000002	AKID	7	IPP (a)	Encounter	Encounter	CPT	99344	
000002	AKID	7	IPP (a)	Encounter	Encounter	CPT	99345	
000002	AKID	7	IPP (a)	Encounter	Encounter	CPT	99347	
000002	AKID	7	IPP (a)	Encounter	Encounter	CPT	99348	
000002	AKID	7	IPP (a)	Encounter	Encounter	CPT	99349	
000002	AKID	7	IPP (a)	Encounter	Encounter	CPT	99350	
000287	AKID	7	IPP (b)	End Stage Renal Disease (ESRD)	Condition / Diagnosis / Problem	I9	585.6	End Stage Renal Disease [Chronic Kidney Disease, Stage V (requiring chronic dialysis)]
000287	AKID	7	IPP (b)	End Stage Renal Disease (ESRD)	Condition / Diagnosis / Problem	I10	N18.6	End Stage Renal Disease (chronic kidney disease requiring chronic dialysis)
000287	AKID	7	IPP (b)	End Stage Renal Disease (ESRD)	Condition / Diagnosis / Problem	SNM	46177005	end stage renal disease
000287	AKID	7	IPP (b)	End Stage Renal Disease (ESRD)	Condition / Diagnosis / Problem	SNM	236435004	end stage renal failure on dialysis
000308	AKID	7	IPP (b)	Hemodialysis	Procedure	CPT	90957	

ADULT KIDNEY DISEASE
Coding Spreadsheet for PCPI eSpecification
AKID-7 : Patients on Erythropoiesis Stimulating Agent (ESA)--Hgb Level > 12.0 g/dL

Value Set ID	Clinical Topic	Topic Indicator	Measure Component	Standard Concept	Standard Category	Taxonomy	Code	Code Descriptor
000308	AKID	7	IPP (b)	Hemodialysis	Procedure	CPT	90958	
000308	AKID	7	IPP (b)	Hemodialysis	Procedure	CPT	90959	
000308	AKID	7	IPP (b)	Hemodialysis	Procedure	CPT	90960	
000308	AKID	7	IPP (b)	Hemodialysis	Procedure	CPT	90961	
000308	AKID	7	IPP (b)	Hemodialysis	Procedure	CPT	90962	
000308	AKID	7	IPP (b)	Hemodialysis	Procedure	CPT	90965	
000308	AKID	7	IPP (b)	Hemodialysis	Procedure	CPT	90966	
000308	AKID	7	IPP (b)	Hemodialysis	Procedure	CPT	90969	
000308	AKID	7	IPP (b)	Hemodialysis	Procedure	CPT	90970	
000308	AKID	7	IPP (b)	Hemodialysis	Procedure	CPT	90989	
000308	AKID	7	IPP (b)	Hemodialysis	Procedure	SNM	302497006	Hemodialysis
000308	AKID	7	IPP (b)	Hemodialysis	Procedure	SNM	233578004	Continuous hemodialysis
000308	AKID	7	IPP (b)	Hemodialysis	Procedure	SNM	233579007	Continuous arteriovenous hemodialysis
000308	AKID	7	IPP (b)	Hemodialysis	Procedure	SNM	233580005	Continuous venovenous hemodialysis
000308	AKID	7	IPP (b)	Hemodialysis	Procedure	SNM	427053002	Extracorporeal albumin hemodialysis
000308	AKID	7	IPP (b)	Hemodialysis	Procedure	SNM	67970008	Hemodialysis, maintenance at home
000308	AKID	7	IPP (b)	Hemodialysis	Procedure	SNM	68341005	Hemodialysis, supervision at home
000308	AKID	7	IPP (b)	Hemodialysis	Procedure	SNM	57274006	Initial hemodialysis
000308	AKID	7	IPP (b)	Hemodialysis	Procedure	SNM	233575001	Intermittent hemodialysis
000308	AKID	7	IPP (b)	Hemodialysis	Procedure	SNM	233576000	Intermittent hemodialysis with sequential ultrafiltration
000308	AKID	7	IPP (b)	Hemodialysis	Procedure	SNM	233577009	Intermittent hemodialysis with continuous ultrafiltration
000308	AKID	7	IPP (b)	Hemodialysis	Procedure	SNM	11932001	Stabilizing hemodialysis
000308	AKID	7	IPP (b)	Hemodialysis	Procedure	SNM	233589006	continuous arteriovenous hemodiafiltration
000308	AKID	7	IPP (b)	Hemodialysis	Procedure	SNM	233590002	continuous venovenous hemodiafiltration
000311	AKID	7	IPP (b)	Peritoneal Dialysis	Procedure	CPT	90945	
000311	AKID	7	IPP (b)	Peritoneal Dialysis	Procedure	CPT	90947	
000311	AKID	7	IPP (b)	Peritoneal Dialysis	Procedure	CPT	90957	
000311	AKID	7	IPP (b)	Peritoneal Dialysis	Procedure	CPT	90958	
000311	AKID	7	IPP (b)	Peritoneal Dialysis	Procedure	CPT	90959	
000311	AKID	7	IPP (b)	Peritoneal Dialysis	Procedure	CPT	90960	
000311	AKID	7	IPP (b)	Peritoneal Dialysis	Procedure	CPT	90961	
000311	AKID	7	IPP (b)	Peritoneal Dialysis	Procedure	CPT	90962	
000311	AKID	7	IPP (b)	Peritoneal Dialysis	Procedure	CPT	90965	
000311	AKID	7	IPP (b)	Peritoneal Dialysis	Procedure	CPT	90966	
000311	AKID	7	IPP (b)	Peritoneal Dialysis	Procedure	CPT	90969	
000311	AKID	7	IPP (b)	Peritoneal Dialysis	Procedure	CPT	90970	
000311	AKID	7	IPP (b)	Peritoneal Dialysis	Procedure	CPT	90989	
000311	AKID	7	IPP (b)	Peritoneal Dialysis	Procedure	SNM	71192002	peritoneal dialysis
000311	AKID	7	IPP (b)	Peritoneal Dialysis	Procedure	SNM	428648006	automated peritoneal dialysis
000311	AKID	7	IPP (b)	Peritoneal Dialysis	Procedure	SNM	225230008	chronic peritoneal dialysis
000311	AKID	7	IPP (b)	Peritoneal Dialysis	Procedure	SNM	238318009	continuous ambulatory peritoneal dialysis
000311	AKID	7	IPP (b)	Peritoneal Dialysis	Procedure	SNM	238319001	continuous cycling peritoneal dialysis
000311	AKID	7	IPP (b)	Peritoneal Dialysis	Procedure	SNM	238321006	intermittent peritoneal dialysis
000311	AKID	7	IPP (b)	Peritoneal Dialysis	Procedure	SNM	238323009	night-time intermittent peritoneal dialysis
000311	AKID	7	IPP (b)	Peritoneal Dialysis	Procedure	SNM	73257006	peritoneal dialysis catheter maintenance
000311	AKID	7	IPP (b)	Peritoneal Dialysis	Procedure	SNM	14684005	peritoneal dialysis excluding cannulation
000311	AKID	7	IPP (b)	Peritoneal Dialysis	Procedure	SNM	676002	peritoneal dialysis including cannulation
000311	AKID	7	IPP (b)	Peritoneal Dialysis	Procedure	SNM	225231007	stab peritoneal dialysis
000311	AKID	7	IPP (b)	Peritoneal Dialysis	Procedure	SNM	238322004	tidal peritoneal dialysis
000319	AKID	7	D	Erythropoietin Stimulating Agent (ESA) Therapy	Medication	RxNorm	753413	Methoxy polyethylene glycol-epoetin beta 1 MG/ML Injectable Solution
000319	AKID	7	D	Erythropoietin Stimulating Agent (ESA) Therapy	Medication	RxNorm	753423	Methoxy polyethylene glycol-epoetin beta 0.1 MG/ML Injectable Solution

ADULT KIDNEY DISEASE
Coding Spreadsheet for PCPI eSpecification
AKID-7 : Patients on Erythropoiesis Stimulating Agent (ESA)--Hgb Level > 12.0 g/dL

Value Set ID	Clinical Topic	Topic Indicator	Measure Component	Standard Concept	Standard Category	Taxonomy	Code	Code Descriptor
000319	AKID	7	D	Erythropoietin Stimulating Agent (ESA) Therapy	Medication	RxNorm	758160	0.3 ML Methoxy polyethylene glycol-epoetin beta 0.5 MG/ML Prefilled Syringe
000319	AKID	7	D	Erythropoietin Stimulating Agent (ESA) Therapy	Medication	RxNorm	758162	0.3 ML Methoxy polyethylene glycol-epoetin beta 0.667 MG/ML Prefilled Syringe
000319	AKID	7	D	Erythropoietin Stimulating Agent (ESA) Therapy	Medication	RxNorm	753427	Methoxy polyethylene glycol-epoetin beta 0.2 MG/ML Injectable Solution
000319	AKID	7	D	Erythropoietin Stimulating Agent (ESA) Therapy	Medication	RxNorm	758164	0.3 ML Methoxy polyethylene glycol-epoetin beta 0.833 MG/ML Prefilled Syringe
000319	AKID	7	D	Erythropoietin Stimulating Agent (ESA) Therapy	Medication	RxNorm	753401	Methoxy polyethylene glycol-epoetin beta 0.3 MG/ML Injectable Solution
000319	AKID	7	D	Erythropoietin Stimulating Agent (ESA) Therapy	Medication	RxNorm	758165	0.6 ML Methoxy polyethylene glycol-epoetin beta 0.667 MG/ML Prefilled Syringe
000319	AKID	7	D	Erythropoietin Stimulating Agent (ESA) Therapy	Medication	RxNorm	753407	Methoxy polyethylene glycol-epoetin beta 0.4 MG/ML Injectable Solution
000319	AKID	7	D	Erythropoietin Stimulating Agent (ESA) Therapy	Medication	RxNorm	758169	0.3 ML Methoxy polyethylene glycol-epoetin beta 0.167 MG/ML Prefilled Syringe
000319	AKID	7	D	Erythropoietin Stimulating Agent (ESA) Therapy	Medication	RxNorm	753411	Methoxy polyethylene glycol-epoetin beta 0.05 MG/ML Injectable Solution
000319	AKID	7	D	Erythropoietin Stimulating Agent (ESA) Therapy	Medication	RxNorm	753415	Methoxy polyethylene glycol-epoetin beta 0.6 MG/ML Injectable Solution
000319	AKID	7	D	Erythropoietin Stimulating Agent (ESA) Therapy	Medication	RxNorm	753415	Methoxy polyethylene glycol-epoetin beta 0.6 MG/ML Injectable Solution
000319	AKID	7	D	Erythropoietin Stimulating Agent (ESA) Therapy	Medication	RxNorm	804171	0.3 ML Methoxy polyethylene glycol-epoetin beta 0.25 MG/ML Prefilled Syringe
000319	AKID	7	D	Erythropoietin Stimulating Agent (ESA) Therapy	Medication	RxNorm	758179	0.6 ML Methoxy polyethylene glycol-epoetin beta 1.33 MG/ML Prefilled Syringe
000319	AKID	7	D	Erythropoietin Stimulating Agent (ESA) Therapy	Medication	RxNorm	349273	darbepoetin alfa 0.025 MG/ML Injectable Solution
000319	AKID	7	D	Erythropoietin Stimulating Agent (ESA) Therapy	Medication	RxNorm	349274	darbepoetin alfa 0.04 MG/ML Injectable Solution
000319	AKID	7	D	Erythropoietin Stimulating Agent (ESA) Therapy	Medication	RxNorm	349275	darbepoetin alfa 0.06 MG/ML Injectable Solution
000319	AKID	7	D	Erythropoietin Stimulating Agent (ESA) Therapy	Medication	RxNorm	730044	0.5 ML darbepoetin alfa 0.2 MG/ML Prefilled Syringe
000319	AKID	7	D	Erythropoietin Stimulating Agent (ESA) Therapy	Medication	RxNorm	349276	darbepoetin alfa 0.1 MG/ML Injectable Solution
000319	AKID	7	D	Erythropoietin Stimulating Agent (ESA) Therapy	Medication	RxNorm	731171	0.3 ML darbepoetin alfa 0.5 MG/ML Prefilled Syringe
000319	AKID	7	D	Erythropoietin Stimulating Agent (ESA) Therapy	Medication	RxNorm	731174	0.4 ML darbepoetin alfa 0.5 MG/ML Prefilled Syringe
000319	AKID	7	D	Erythropoietin Stimulating Agent (ESA) Therapy	Medication	RxNorm	349277	darbepoetin alfa 0.2 MG/ML Injectable Solution
000319	AKID	7	D	Erythropoietin Stimulating Agent (ESA) Therapy	Medication	RxNorm	731179	0.6 ML darbepoetin alfa 0.5 MG/ML Prefilled Syringe
000319	AKID	7	D	Erythropoietin Stimulating Agent (ESA) Therapy	Medication	RxNorm	731184	1 ML darbepoetin alfa 0.5 MG/ML Prefilled Syringe
000319	AKID	7	D	Erythropoietin Stimulating Agent (ESA) Therapy	Medication	RxNorm	403943	darbepoetin alfa 0.5 MG/ML Injectable Solution
000319	AKID	7	D	Erythropoietin Stimulating Agent (ESA) Therapy	Medication	RxNorm	351247	darbepoetin alfa 0.3 MG/ML Injectable Solution
000319	AKID	7	D	Erythropoietin Stimulating Agent (ESA) Therapy	Medication	RxNorm	731181	0.4 ML darbepoetin alfa 0.1 MG/ML Prefilled Syringe
000319	AKID	7	D	Erythropoietin Stimulating Agent (ESA) Therapy	Medication	RxNorm	731167	0.3 ML darbepoetin alfa 0.2 MG/ML Prefilled Syringe
000319	AKID	7	D	Erythropoietin Stimulating Agent (ESA) Therapy	Medication	RxNorm	731176	0.42 ML darbepoetin alfa 0.06 MG/ML Prefilled Syringe
000319	AKID	7	D	Erythropoietin Stimulating Agent (ESA) Therapy	Medication	RxNorm	352044	darbepoetin alfa 0.025 MG/ML Injectable Solution [Aranesp]
000319	AKID	7	D	Erythropoietin Stimulating Agent (ESA) Therapy	Medication	RxNorm	352045	darbepoetin alfa 0.04 MG/ML Injectable Solution [Aranesp]
000319	AKID	7	D	Erythropoietin Stimulating Agent (ESA) Therapy	Medication	RxNorm	352046	darbepoetin alfa 0.06 MG/ML Injectable Solution [Aranesp]
000319	AKID	7	D	Erythropoietin Stimulating Agent (ESA) Therapy	Medication	RxNorm	730046	0.5 ML darbepoetin alfa 0.2 MG/ML Prefilled Syringe [Aranesp]
000319	AKID	7	D	Erythropoietin Stimulating Agent (ESA) Therapy	Medication	RxNorm	352047	darbepoetin alfa 0.1 MG/ML Injectable Solution [Aranesp]
000319	AKID	7	D	Erythropoietin Stimulating Agent (ESA) Therapy	Medication	RxNorm	731231	0.3 ML darbepoetin alfa 0.5 MG/ML Prefilled Syringe [Aranesp]
000319	AKID	7	D	Erythropoietin Stimulating Agent (ESA) Therapy	Medication	RxNorm	731235	0.4 ML darbepoetin alfa 0.5 MG/ML Prefilled Syringe [Aranesp]
000319	AKID	7	D	Erythropoietin Stimulating Agent (ESA) Therapy	Medication	RxNorm	352048	darbepoetin alfa 0.2 MG/ML Injectable Solution [Aranesp]
000319	AKID	7	D	Erythropoietin Stimulating Agent (ESA) Therapy	Medication	RxNorm	731229	0.6 ML darbepoetin alfa 0.5 MG/ML Prefilled Syringe [Aranesp]
000319	AKID	7	D	Erythropoietin Stimulating Agent (ESA) Therapy	Medication	RxNorm	352262	darbepoetin alfa 0.3 MG/ML Injectable Solution [Aranesp]
000319	AKID	7	D	Erythropoietin Stimulating Agent (ESA) Therapy	Medication	RxNorm	731241	1 ML darbepoetin alfa 0.5 MG/ML Prefilled Syringe [Aranesp]
000319	AKID	7	D	Erythropoietin Stimulating Agent (ESA) Therapy	Medication	RxNorm	404686	darbepoetin alfa 0.5 MG/ML Injectable Solution [Aranesp]

ADULT KIDNEY DISEASE
Coding Spreadsheet for PCPI eSpecification
AKID-7 : Patients on Erythropoiesis Stimulating Agent (ESA)--Hgb Level > 12.0 g/dL

Value Set ID	Clinical Topic	Topic Indicator	Measure Component	Standard Concept	Standard Category	Taxonomy	Code	Code Descriptor
000319	AKID	7	D	Erythropoietin Stimulating Agent (ESA) Therapy	Medication	RxNorm	731245	0.42 ML darbepoetin alfa 0.06 MG/ML Prefilled Syringe [Aranesp]
000319	AKID	7	D	Erythropoietin Stimulating Agent (ESA) Therapy	Medication	RxNorm	731227	0.4 ML darbepoetin alfa 0.1 MG/ML Prefilled Syringe [Aranesp]
000319	AKID	7	D	Erythropoietin Stimulating Agent (ESA) Therapy	Medication	RxNorm	731250	0.3 ML darbepoetin alfa 0.2 MG/ML Prefilled Syringe [Aranesp]
000319	AKID	7	D	Erythropoietin Stimulating Agent (ESA) Therapy	Medication	RxNorm	242706	Epoetin Alfa 40000 UNT/ML Injectable Solution
000319	AKID	7	D	Erythropoietin Stimulating Agent (ESA) Therapy	Medication	RxNorm	727870	0.5 ML Epoetin Alfa 10000 UNT/ML Prefilled Syringe
000319	AKID	7	D	Erythropoietin Stimulating Agent (ESA) Therapy	Medication	RxNorm	727868	0.6 ML Epoetin Alfa 10000 UNT/ML Prefilled Syringe
000319	AKID	7	D	Erythropoietin Stimulating Agent (ESA) Therapy	Medication	RxNorm	727868	0.6 ML Epoetin Alfa 10000 UNT/ML Prefilled Syringe
000319	AKID	7	D	Erythropoietin Stimulating Agent (ESA) Therapy	Medication	RxNorm	792693	0.8 ML Epoetin Alfa 10000 UNT/ML Prefilled Syringe
000319	AKID	7	D	Erythropoietin Stimulating Agent (ESA) Therapy	Medication	RxNorm	792696	0.9 ML Epoetin Alfa 10000 UNT/ML Prefilled Syringe
000319	AKID	7	D	Erythropoietin Stimulating Agent (ESA) Therapy	Medication	RxNorm	239999	Epoetin Alfa 4000 UNT/ML Injectable Solution
000319	AKID	7	D	Erythropoietin Stimulating Agent (ESA) Therapy	Medication	RxNorm	792686	0.4 ML Epoetin Alfa 10000 UNT/ML Prefilled Syringe
000319	AKID	7	D	Erythropoietin Stimulating Agent (ESA) Therapy	Medication	RxNorm	240377	Epoetin Alfa 3000 UNT/ML Injectable Solution
000319	AKID	7	D	Erythropoietin Stimulating Agent (ESA) Therapy	Medication	RxNorm	792683	0.3 ML Epoetin Alfa 10000 UNT/ML Prefilled Syringe
000319	AKID	7	D	Erythropoietin Stimulating Agent (ESA) Therapy	Medication	RxNorm	241999	Epoetin Alfa 20000 UNT/ML Injectable Solution
000319	AKID	7	D	Erythropoietin Stimulating Agent (ESA) Therapy	Medication	RxNorm	239998	Epoetin Alfa 2000 UNT/ML Injectable Solution
000319	AKID	7	D	Erythropoietin Stimulating Agent (ESA) Therapy	Medication	RxNorm	792715	0.5 ML Epoetin Alfa 4000 UNT/ML Prefilled Syringe
000319	AKID	7	D	Erythropoietin Stimulating Agent (ESA) Therapy	Medication	RxNorm	792740	0.6 ML Epoetin Alfa 20000 UNT/ML Prefilled Syringe
000319	AKID	7	D	Erythropoietin Stimulating Agent (ESA) Therapy	Medication	RxNorm	240000	Epoetin Alfa 10000 UNT/ML Injectable Solution
000319	AKID	7	D	Erythropoietin Stimulating Agent (ESA) Therapy	Medication	RxNorm	727850	0.5 ML Epoetin Alfa 2000 UNT/ML Prefilled Syringe
000319	AKID	7	D	Erythropoietin Stimulating Agent (ESA) Therapy	Medication	RxNorm	792710	1 ML Epoetin Alfa 10000 UNT/ML Prefilled Syringe
000319	AKID	7	D	Erythropoietin Stimulating Agent (ESA) Therapy	Medication	RxNorm	213475	Epoetin Alfa 40000 UNT/ML Injectable Solution [Procrit]
000319	AKID	7	D	Erythropoietin Stimulating Agent (ESA) Therapy	Medication	RxNorm	205924	Epoetin Alfa 4000 UNT/ML Injectable Solution [Procrit]
000319	AKID	7	D	Erythropoietin Stimulating Agent (ESA) Therapy	Medication	RxNorm	205922	Epoetin Alfa 3000 UNT/ML Injectable Solution [Procrit]
000319	AKID	7	D	Erythropoietin Stimulating Agent (ESA) Therapy	Medication	RxNorm	212219	Epoetin Alfa 20000 UNT/ML Injectable Solution [Procrit]
000319	AKID	7	D	Erythropoietin Stimulating Agent (ESA) Therapy	Medication	RxNorm	205918	Epoetin Alfa 2000 UNT/ML Injectable Solution [Procrit]
000319	AKID	7	D	Erythropoietin Stimulating Agent (ESA) Therapy	Medication	RxNorm	205913	Epoetin Alfa 10000 UNT/ML Injectable Solution [Procrit]
000319	AKID	7	D	Erythropoietin Stimulating Agent (ESA) Therapy	Medication	RxNorm	150915	Epoetin Alfa 2000 UNT/ML Injectable Solution [Epex]
000319	AKID	7	D	Erythropoietin Stimulating Agent (ESA) Therapy	Medication	RxNorm	205923	Epoetin Alfa 4000 UNT/ML Injectable Solution [Epogen]
000319	AKID	7	D	Erythropoietin Stimulating Agent (ESA) Therapy	Medication	RxNorm	213474	Epoetin Alfa 40000 UNT/ML Injectable Solution [Epogen]
000319	AKID	7	D	Erythropoietin Stimulating Agent (ESA) Therapy	Medication	RxNorm	205921	Epoetin Alfa 3000 UNT/ML Injectable Solution [Epogen]
000319	AKID	7	D	Erythropoietin Stimulating Agent (ESA) Therapy	Medication	RxNorm	212218	Epoetin Alfa 20000 UNT/ML Injectable Solution [Epogen]
000319	AKID	7	D	Erythropoietin Stimulating Agent (ESA) Therapy	Medication	RxNorm	205917	Epoetin Alfa 2000 UNT/ML Injectable Solution [Epogen]
000319	AKID	7	D	Erythropoietin Stimulating Agent (ESA) Therapy	Medication	RxNorm	205912	Epoetin Alfa 10000 UNT/ML Injectable Solution [Epogen]
000319	AKID	7	D	Erythropoietin Stimulating Agent (ESA) Therapy	Medication	RxNorm	153633	epoetin beta 10000 UNT/ML Injectable Solution
000319	AKID	7	D	Erythropoietin Stimulating Agent (ESA) Therapy	Medication	RxNorm	153630	epoetin beta 20000 UNT/ML Injectable Solution
000319	AKID	7	D	Erythropoietin Stimulating Agent (ESA) Therapy	Medication	RxNorm	153629	epoetin beta 5000 UNT/ML Injectable Solution
000319	AKID	7	D	Erythropoietin Stimulating Agent (ESA) Therapy	Medication	RxNorm	387037	Epoetin beta 60000 UNT/ML Injectable Solution
000318	AKID	7	D	Hemoglobin	Laboratory Test	LN	10346-5	Hemoglobin A
000318	AKID	7	D	Hemoglobin	Laboratory Test	LN	14775-1	Hemoglobin
000318	AKID	7	D	Hemoglobin	Laboratory Test	LN	20509-6	Hemoglobin
000318	AKID	7	D	Hemoglobin	Laboratory Test	LN	30313-1	Hemoglobin
000318	AKID	7	D	Hemoglobin	Laboratory Test	LN	30350-3	Hemoglobin
000318	AKID	7	D	Hemoglobin	Laboratory Test	LN	30351-1	Hemoglobin
000318	AKID	7	D	Hemoglobin	Laboratory Test	LN	30352-9	Hemoglobin
000318	AKID	7	D	Hemoglobin	Laboratory Test	LN	30353-7	Hemoglobin
000318	AKID	7	D	Hemoglobin	Laboratory Test	LN	30354-5	Hemoglobin
000318	AKID	7	D	Hemoglobin	Laboratory Test	LN	33025-8	Hemoglobin
000318	AKID	7	D	Hemoglobin	Laboratory Test	LN	33026-6	Hemoglobin
000318	AKID	7	D	Hemoglobin	Laboratory Test	LN	33509-1	Hemoglobin
000318	AKID	7	D	Hemoglobin	Laboratory Test	LN	35183-3	Hemoglobin
000318	AKID	7	D	Hemoglobin	Laboratory Test	LN	40719-7	Hemoglobin
000318	AKID	7	D	Hemoglobin	Laboratory Test	LN	43113-0	Hemoglobin panel
000318	AKID	7	D	Hemoglobin	Laboratory Test	LN	42810-2	Hemoglobin

ADULT KIDNEY DISEASE
Coding Spreadsheet for PCPI eSpecification
AKID-7 : Patients on Erythropoiesis Stimulating Agent (ESA)--Hgb Level > 12.0 g/dL

Value Set ID	Clinical Topic	Topic Indicator	Measure Component	Standard Concept	Standard Category	Taxonomy	Code	Code Descriptor
000318	AKID	7	D	Hemoglobin	Laboratory Test	LN	4588-0	Hemoglobin H/Hemoglobin.total
000318	AKID	7	D	Hemoglobin	Laboratory Test	LN	44920-7	Hemoglobin C/Hemoglobin.total
000318	AKID	7	D	Hemoglobin	Laboratory Test	LN	44921-5	Hemoglobin D/Hemoglobin.total
000318	AKID	7	D	Hemoglobin	Laboratory Test	LN	44922-3	Hemoglobin E/Hemoglobin.total
000318	AKID	7	D	Hemoglobin	Laboratory Test	LN	44923-1	Hemoglobin S/Hemoglobin.total
000318	AKID	7	D	Hemoglobin	Laboratory Test	LN	4534-4	Cyanmethemoglobin/Hemoglobin.total
000318	AKID	7	D	Hemoglobin	Laboratory Test	LN	4683-9	Sulfhemoglobin
000318	AKID	7	D	Hemoglobin	Laboratory Test	LN	4536-9	Deoxyhemoglobin/Hemoglobin.total
000318	AKID	7	D	Hemoglobin	Laboratory Test	LN	4546-8	Hemoglobin A/Hemoglobin.total
000318	AKID	7	D	Hemoglobin	Laboratory Test	LN	4547-6	Hemoglobin A1/Hemoglobin.total
000318	AKID	7	D	Hemoglobin	Laboratory Test	LN	4550-0	Hemoglobin A2
000318	AKID	7	D	Hemoglobin	Laboratory Test	LN	4551-8	Hemoglobin A2/Hemoglobin.total
000318	AKID	7	D	Hemoglobin	Laboratory Test	LN	4552-6	Hemoglobin A2/Hemoglobin.total
000318	AKID	7	D	Hemoglobin	Laboratory Test	LN	4553-4	Hemoglobin A2/Hemoglobin.total
000318	AKID	7	D	Hemoglobin	Laboratory Test	LN	4554-2	Hemoglobin A2/Hemoglobin.total
000318	AKID	7	D	Hemoglobin	Laboratory Test	LN	4555-9	Hemoglobin A3/Hemoglobin.total
000318	AKID	7	D	Hemoglobin	Laboratory Test	LN	4561-7	Hemoglobin C/Hemoglobin.total
000318	AKID	7	D	Hemoglobin	Laboratory Test	LN	4562-5	Hemoglobin C/Hemoglobin.total
000318	AKID	7	D	Hemoglobin	Laboratory Test	LN	4563-3	Hemoglobin C/Hemoglobin.total
000318	AKID	7	D	Hemoglobin	Laboratory Test	LN	4569-0	Hemoglobin D/Hemoglobin.total
000318	AKID	7	D	Hemoglobin	Laboratory Test	LN	4571-6	Hemoglobin D-Punjab
000318	AKID	7	D	Hemoglobin	Laboratory Test	LN	4580-7	Hemoglobin F1/Hemoglobin.total
000318	AKID	7	D	Hemoglobin	Laboratory Test	LN	4573-2	Hemoglobin E/Hemoglobin.total
000318	AKID	7	D	Hemoglobin	Laboratory Test	LN	4574-0	Hemoglobin E/Hemoglobin.total
000318	AKID	7	D	Hemoglobin	Laboratory Test	LN	4575-7	Hemoglobin E/Hemoglobin.total
000318	AKID	7	D	Hemoglobin	Laboratory Test	LN	4576-5	Hemoglobin F/Hemoglobin.total
000318	AKID	7	D	Hemoglobin	Laboratory Test	LN	4578-1	Hemoglobin F-Texas
000318	AKID	7	D	Hemoglobin	Laboratory Test	LN	4582-3	Hemoglobin G-Coushatta
000318	AKID	7	D	Hemoglobin	Laboratory Test	LN	4587-2	Hemoglobin H/Hemoglobin.total
000318	AKID	7	D	Hemoglobin	Laboratory Test	LN	4625-0	Hemoglobin S/Hemoglobin.total
000318	AKID	7	D	Hemoglobin	Laboratory Test	LN	4633-4	Hemoglobin F/Hemoglobin.total
000318	AKID	7	D	Hemoglobin	Laboratory Test	LN	4635-9	Hemoglobin.free
000318	AKID	7	D	Hemoglobin	Laboratory Test	LN	4636-7	Hemoglobin.free
000318	AKID	7	D	Hemoglobin	Laboratory Test	LN	4638-3	Hemoglobin.thermolabile/Hemoglobin.total
000318	AKID	7	D	Hemoglobin	Laboratory Test	LN	46423-0	Hemoglobin distribution width
000318	AKID	7	D	Hemoglobin	Laboratory Test	LN	4685-4	Sulfhemoglobin/Hemoglobin.total
000318	AKID	7	D	Hemoglobin	Laboratory Test	LN	48343-8	Hemoglobin.other/Hemoglobin.total
000318	AKID	7	D	Hemoglobin	Laboratory Test	LN	47278-7	Erythrocyte mean corpuscular hemoglobin
000318	AKID	7	D	Hemoglobin	Laboratory Test	LN	47279-5	Erythrocyte mean corpuscular hemoglobin concentration
000318	AKID	7	D	Hemoglobin	Laboratory Test	LN	48711-6	Hemoglobin.free^post transfusion reaction
000318	AKID	7	D	Hemoglobin	Laboratory Test	LN	48725-6	Hemoglobin^pre therapeutic phlebotomy
000318	AKID	7	D	Hemoglobin	Laboratory Test	LN	49137-3	Hemoglobin
000318	AKID	7	D	Hemoglobin	Laboratory Test	LN	50559-4	Hemoglobin
000318	AKID	7	D	Hemoglobin	Laboratory Test	LN	50765-7	Hemoglobin Hasharon/Hemoglobin.total
000318	AKID	7	D	Hemoglobin	Laboratory Test	LN	51196-4	Hemoglobin A1/Hemoglobin.total
000318	AKID	7	D	Hemoglobin	Laboratory Test	LN	51613-8	Hemoglobin J/Hemoglobin.total
000318	AKID	7	D	Hemoglobin	Laboratory Test	LN	51614-6	Hemoglobin M/Hemoglobin.total
000318	AKID	7	D	Hemoglobin	Laboratory Test	LN	51615-3	Hemoglobin A2+C/Hemoglobin.total
000318	AKID	7	D	Hemoglobin	Laboratory Test	LN	51616-1	Hemoglobin A2+E/Hemoglobin.total
000318	AKID	7	D	Hemoglobin	Laboratory Test	LN	53223-4	Hemoglobin G/Hemoglobin.total
000318	AKID	7	D	Hemoglobin	Laboratory Test	LN	53553-4	Estimated average glucose
000318	AKID	7	D	Hemoglobin	Laboratory Test	LN	53857-9	Hemoglobin F
000318	AKID	7	D	Hemoglobin	Laboratory Test	LN	54068-2	Hemoglobin O-Arab/Hemoglobin.total
000318	AKID	7	D	Hemoglobin	Laboratory Test	LN	54069-0	Hemoglobin Barts/Hemoglobin.total

ADULT KIDNEY DISEASE
Coding Spreadsheet for PCPI eSpecification
AKID-7 : Patients on Erythropoiesis Stimulating Agent (ESA)--Hgb Level > 12.0 g/dL

Value Set ID	Clinical Topic	Topic Indicator	Measure Component	Standard Concept	Standard Category	Taxonomy	Code	Code Descriptor
000318	AKID	7	D	Hemoglobin	Laboratory Test	LN	54070-8	Hemoglobin D/Hemoglobin.total
000318	AKID	7	D	Hemoglobin	Laboratory Test	LN	54071-6	Hemoglobin E/Hemoglobin.total
000318	AKID	7	D	Hemoglobin	Laboratory Test	LN	54072-4	Hemoglobin A/Hemoglobin.total
000318	AKID	7	D	Hemoglobin	Laboratory Test	LN	54073-2	Hemoglobin C/Hemoglobin.total
000318	AKID	7	D	Hemoglobin	Laboratory Test	LN	54074-0	Hemoglobin F/Hemoglobin.total
000318	AKID	7	D	Hemoglobin	Laboratory Test	LN	54209-2	Hemoglobin C-Harlem/Hemoglobin.total
000318	AKID	7	D	Hemoglobin	Laboratory Test	LN	54289-4	Hemoglobin
000318	AKID	7	D	Hemoglobin	Laboratory Test	LN	55370-1	Hemoglobin A2+C+E+O/Hemoglobin.total
000318	AKID	7	D	Hemoglobin	Laboratory Test	LN	55371-9	Hemoglobin A2+E+O/Hemoglobin.total
000318	AKID	7	D	Hemoglobin	Laboratory Test	LN	55372-7	Hemoglobin Constant Spring/Hemoglobin.total
000318	AKID	7	D	Hemoglobin	Laboratory Test	LN	55373-5	Hemoglobin D+G/Hemoglobin.total
000318	AKID	7	D	Hemoglobin	Laboratory Test	LN	55374-3	Hemoglobin N+I/Hemoglobin.total
000318	AKID	7	D	Hemoglobin	Laboratory Test	LN	55782-7	Hemoglobin
000318	AKID	7	D	Hemoglobin	Laboratory Test	LN	55942-7	Methemoglobin/Hemoglobin.total
000318	AKID	7	D	Hemoglobin	Laboratory Test	LN	56040-9	Methemoglobin
000318	AKID	7	D	Hemoglobin	Laboratory Test	LN	56476-5	Hemoglobin S/Hemoglobin.total
000318	AKID	7	D	Hemoglobin	Laboratory Test	LN	58453-2	Hemoglobin.gastrointestinal
000318	AKID	7	D	Hemoglobin	Laboratory Test	LN	5913-9	Hemoglobin F/Hemoglobin.total
000318	AKID	7	D	Hemoglobin	Laboratory Test	LN	59260-0	Hemoglobin
000318	AKID	7	D	Hemoglobin	Laboratory Test	LN	59467-1	Erythrocyte mean corpuscular hemoglobin concentration
000318	AKID	7	D	Hemoglobin	Laboratory Test	LN	59468-9	Erythrocyte mean corpuscular hemoglobin
000318	AKID	7	D	Hemoglobin	Laboratory Test	LN	61180-6	Hemoglobin
000318	AKID	7	D	Hemoglobin	Laboratory Test	LN	62243-1	Erythrocyte mean corpuscular hemoglobin
000318	AKID	7	D	Hemoglobin	Laboratory Test	LN	62246-4	Erythrocyte mean corpuscular hemoglobin concentration
000318	AKID	7	D	Hemoglobin	Laboratory Test	LN	718-7	Hemoglobin
000318	AKID	7	D	Hemoglobin	Laboratory Test	LN	719-5	Hemoglobin
000318	AKID	7	D	Hemoglobin	Laboratory Test	LN	721-1	Hemoglobin.free
000318	AKID	7	D	Hemoglobin	Laboratory Test	LN	722-9	Hemoglobin
000318	AKID	7	D	Hemoglobin	Laboratory Test	LN	723-7	Hemoglobin
000318	AKID	7	D	Hemoglobin	Laboratory Test	LN	724-5	Hemoglobin
000318	AKID	7	D	Hemoglobin	Laboratory Test	LN	726-0	Hemoglobin
000318	AKID	7	D	Hemoglobin	Laboratory Test	LN	727-8	Hemoglobin distribution width
000318	AKID	7	D	Hemoglobin	Laboratory Test	LN	785-6	Erythrocyte mean corpuscular hemoglobin
000318	AKID	7	D	Hemoglobin	Laboratory Test	LN	786-4	Erythrocyte mean corpuscular hemoglobin concentration
000318	AKID	7	D	Hemoglobin	Laboratory Test	LN	9749-3	Hemoglobin F